

PROJECT:	_____
LOCATION:	_____
ITEM#:	_____
QUANTITY:	_____

**COMPETITOR SERIES®**

**C-HBC50-HC**

**C-HBC65-HC**

**C-HBC95-HC**

# HORIZONTAL BOTTLE COOLERS

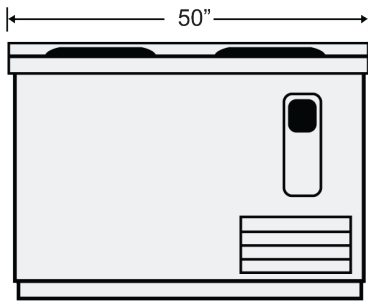
- Beautiful ergonomic appearance
- Digital Controller with Temperature Read-out
- Black corrosion resistant steel exterior, stainless steel interior and stainless steel top
- Forced air refrigeration system
- Side mount compressor
- (4) leveling feet included
- Door locks for each lid
- Epoxy coated wire bin dividers included
- Bottle opener and cap catcher included
- Accessory: optional casters upon request
- Bottle opener and cap catcher included
- All Natural R290 Hydrocarbon Refrigerant
- US Department of Energy Certified
- Migali® Protection Plan: 1 Year Parts & Labor Warranty, 5 Years Compressor Warranty

MODEL	SLIDING LIDS WITH LOCK	STORAGE CAPACITY	CAPACITY CU/FT	BIN DIVIDERS	H/P	AMPS	VOLTAGE	PLUG TYPE	TEMP RANGE	EXTERIOR DIMENSIONS W x D x H	INTERIOR DIMENSIONS W x D x H	PACKAGED DIMENSIONS W x D x H	WEIGHT	PACKAGED WEIGHT
C-HBC50-HC	2	16.5 (12oz) Bottle Cases/ 24 (12 oz) Can Cases	13	3	1/3	8	115/60/1	Nema 5-15P	+33° F (~) +41° F	50" x 28.5" x 33"	45" x 23" x 26"	52" x 31" x 35"	325 lbs.	355 lbs.
C-HBC65-HC	2	24 (12oz) Bottle Cases/ 32 (12 oz) Can Cases	18	3	1/3	8	115/60/1	Nema 5-15P	+33° F (~) +41° F	65" x 28.5" x 33"	60" x 23" x 26"	67" x 31" x 35"	394 lbs.	421 lbs.
C-HBC95-HC	3	37 1/2 (12oz) Bottle Cases/ 55 (12 oz) Can Cases	28	5	1/2	7.4	115/60/1	Nema 5-15P	+33° F (~) +41° F	95" x 28.5" x 33"	90" x 23" x 26"	97" x 31" x 35"	423 lbs.	456 lbs.

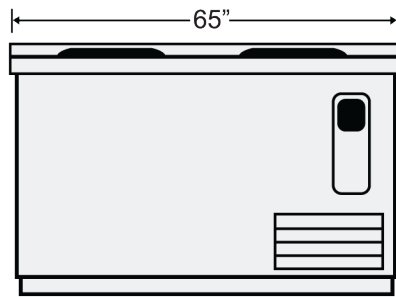
**NOTE: MIGALI® RESERVES THE RIGHT TO CHANGE SPECIFICATIONS WITHOUT NOTICE**

# DIMENSIONAL DRAWINGS

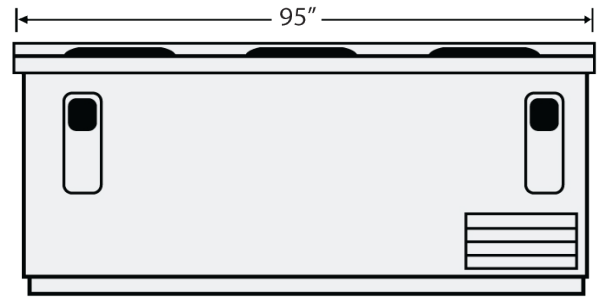
**C-HBC50-HC**



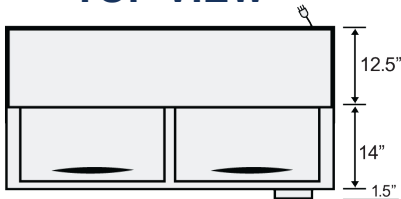
**C-HBC65-HC**



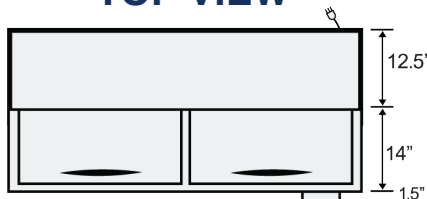
**C-HBC95-HC**



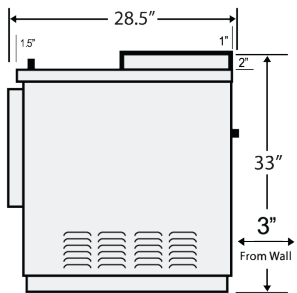
**C-HBC50-HC  
TOP VIEW**



**C-HBC65-HC  
TOP VIEW**



**C-HBC95-HC  
TOP VIEW**



**SIDE VIEW (1,2,3) DOOR MODELS**



MIGALI® REMAINS AN AMERICAN FAMILY COMPANY SINCE 1955